

Analytical Solutions

May 9, 2007 (Version 2.0)

for BioTechnology

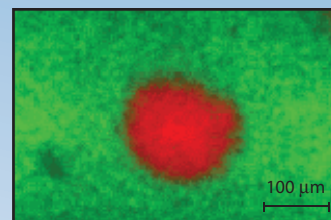
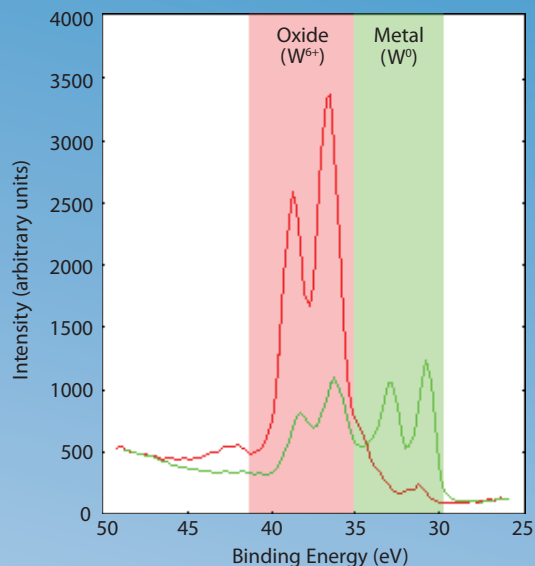
BN 1405

Evaluating Corrosion Chemistry with μ -XPS

Discussion

Localized corrosion can adversely affect a variety of materials. X-ray Photoelectron Spectroscopy (XPS), also known as ESCA, can quantitatively evaluate the surface chemistry associated with corrosion products and similar residues. Identifying the amount and form of a corrosion product provides a means to measure the effectiveness of processes designed to minimize corrosion related problems.

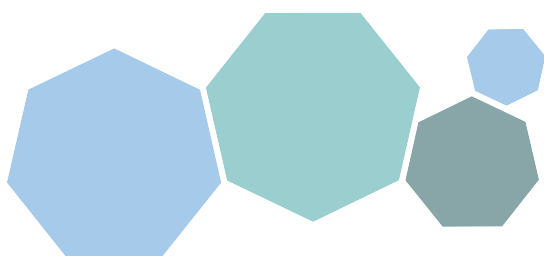
In the example shown below, a $\sim 100 \mu\text{m}$ corrosion pit in an Al-13W metal film was analyzed by small spot XPS. Quantitative data is tabulated below comparing the uncorroded, 'as-received' surface chemistry with areas inside and outside a corrosion pit. An XPS chemical state map contrasting the oxidation state of tungsten inside and outside the pit is also shown. Enrichment of the total tungsten concentration and depletion of aluminum inside the pit relative to the surrounding area is evident. In addition, the highly oxidized form of tungsten (W^{6+}) is concentrated inside the pit. Combining quantitative chemical state characterization with a spatial resolution approaching $10 \mu\text{m}$, as demonstrated here, allows small spot XPS to address a wide range of corrosion (and other) problems.



W4f XPS Chemical Image
Tungsten oxide is shown in red and the less oxidized region surrounding the pit is shown in green (above). These features correspond to the shaded areas on the spectrum (left).

Area	Relative Atomic Concentration (%)						
	C	O	Al ⁰	Al ³⁺	W ⁰	W ⁴⁺	W ⁶⁺
As Received	36	39	5	16	3	-	-
Outside Pit	22	49	6	17	3	~0.5	2
Inside Pit	14	60	-	11	0.5	1	12

Elemental and chemical state composition of surfaces from Al-13W samples before and after undergoing localized corrosion.



United States Locations

Tempe, Arizona
+1 480 239 0602 info.az@eaglabs.com
+1 602 470 2655 fax

Sunnyvale, California
810 Kifer Road
+1 408 530 3500 info.ca@eaglabs.com
+1 408 530 3501 fax

1135 E Arques Avenue
+1 408 738 3033
+1 408 738 3035 fax

785 Lucerne Drive
+1 408 737 3892
+1 408 737 3916 fax

Peabody, Massachusetts
+1 978 278 9500 info.ma@eaglabs.com
+1 978 278 9501 fax

Chanhassen, Minnesota
+1 952 828 6411 info.mn@eaglabs.com
+1 952 828 6449 fax

East Windsor, New Jersey
+1 609 371 4800 info.nj@eaglabs.com
+1 609 371 5666 fax

Syracuse, New York
+1 315 431 9900 info.ny@eaglabs.com
+1 315 431 9800 fax

Raleigh, North Carolina
+1 919 829 7041 info.nc@eaglabs.com
+1 919 829 5518 fax

Round Rock, Texas
+1 512 671 9500 info.tx@eaglabs.com
+1 512 671 9501 fax

International Locations

Shanghai, China
+ 86 21 6879 6088 info.cn@eaglabs.com
+ 86 21 6879 9086 fax

Tournefeuille, France
+ 33 5 61 73 15 29 info.fr@eaglabs.com
+ 33 5 61 73 15 67 fax

Frankfurt, Germany
+ 49 (0) 693053213 info.de@eaglabs.com
+ 49 (0) 69307941 fax

Tokyo, Japan
+ 81 3 5396 0531 info.jp@eaglabs.com
+ 81 3 5396 1930 fax

HsinChu, Taiwan
+ 886 3 5632303 info.tw@eaglabs.com
+ 886 3 5632306 fax

Uxbridge, United Kingdom
+ 44 (0) 1895 811194 info.uk@eaglabs.com
+ 44 (0) 1895 810350 fax